

DIY Installation *6 steps to an instantly greener world!*



1 Measuring

To calculate the lawn area (m²), measure the length and the width, then multiply these two figures together. For irregular shapes, divide area into smaller squares or triangles, calculate each space then add together. Each slab of lawn is approx. 0.5m², measuring 1220mm x 410mm. It is advisable to allow extra turf when ordering as you may have some wastage, particularly if your lawn is an irregular shape.



4 Watering & Rolling

Water immediately after installing. During hot weather or when installing larger quantities, begin watering once you have layed half or a small section. Water in a methodical fashion ensuring that each slab has been watered thoroughly and evenly. The soil under the slabs must be kept damp until the roots have established. Watering 2-4 times per day is recommended but don't flood it. Short 5 minute waters are best. If you have sub surface irrigation you must water from above until the roots have established. Roll the lawn with a water filled or concrete roller after the initial water, this will ensure maximum soil contact.



2 Preparation

The amount of site preparation will vary from site to site, however, the more time and effort you put into your site preparation the better your end result will be. Do not lay lawn on top of existing lawn or weeds. Spray existing lawn and weeds using Roundup or Glyphosate. Remove all desiccated lawn, weeds, stones and debris. Cultivate the soil to a depth of 100mm using a rotary hoe or a pitch fork. If you have minimal or poor soil, add some additional soil mix to your site.

The prepared area should sit 30mm lower than your paths, driveways etc. This will allow for the lawn to sit flush once installed. Level the soil by using a rake or a straight piece of timber and continue to rake until you have a smooth, even surface.

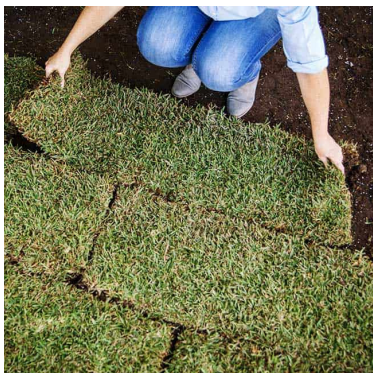


5 Mowing

Do not mow your lawn until the roots have fully established, approx. 3-4 weeks after installing. The first mow needs to be gentle, just taking the tips off.

Mowing can take place every 7-14 days during Spring and Summer and every 2-5 weeks during Autumn and Winter or as required. Remember never take off more than one third of the leaf blade.

Each variety requires different maintenance, we send a mowing schedule with all turf orders.



3 Installation

Lawn needs to be installed the day you receive it to prevent the roots from drying out. Ensure your soil is damp (not soaking wet). Apply Sir Launcher Fertiliser evenly following the instructions on the packet. Begin laying along a straight edge, staggering the joins in a **brick like pattern**. Ideally, start laying from the furthest point and work your way backwards to prevent you from walking on your new turf. If laying on a slope, lay across rather than down the slope, pegs may be needed to hold the lawn in place until the roots have established. Use a shovel, knife or hedge shears to cut and shape the lawn.



6 Fertilising

For best results, fertilise your lawn 6 weeks after installation using a NPK blend fertiliser.

To have the best looking lawn on your street, we recommend to fertilise once in September, December, and March and again in May.

**TifTuf has lower fertilising requirements. Starter fertiliser is not recommended during the warmer months (Sept to March). TifTuf requires less than 1/3 of the fertiliser than other lawns.*

**Please note this is only a guideline, if you are concerned about your lawn consult us at Sunnyside Instant Lawn.*